

## Unloaded L-shaped panels

**XB100.216** PATCHPANEL 19" 1U 16 X KEYSTONE MODULE - COLOUR: GREY

**XB100.224** PATCHPANEL 19" 1U 24 X KEYSTONE MODULE - COLOUR: GREY

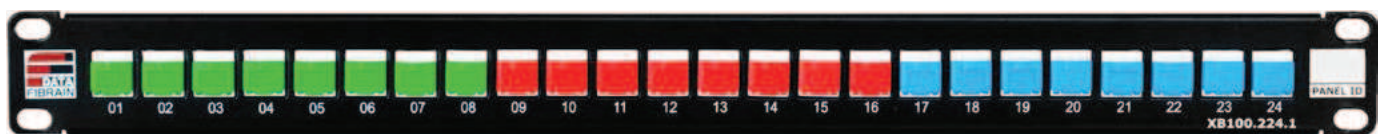
**XB100.224.1** COLOUR: BLACK

**XB100.232** PATCHPANEL 19" 1U 32 X KEYSTONE MODULE - COLOUR: GREY

**XB100.232.1** COLOUR: BLACK

### Features

- 19" universal and modular panel
- Integrated cable shelf arrangement facilitating cable placement with the use of cable ties
- Placing up to 32 shielded or non-shielded modules
- Metal construction ensuring galvanic connection to shield
- Possibility to use exchangeable anti-dust covers to arrange subsystems in structured cabling



## Voice panels

**XV100.200** PATCHPANEL FIBRAINDATA VOICE SERIES 25 PORTS

**XV100.210** PATCHPANEL FIBRAINDATA VOICE SERIES 50 PORTS

### ELECTRICAL AND MECHANICAL PARAMETERS

|                         |  |
|-------------------------|--|
| Frame                   | 1.5 mm steel sheet   |
| Jacket                  | Non-shielded RJ45 cat. 3   |
| Housing                 | UL94V-0 black thermoplastic                                      |
| Contact material        | phosphor-bronze  |
| Contacts                | 0.35 mm diameter covered with 50 µm gold and 100 µm nickel layer |
| Jack durability         | >750 connection cycles in accordance with EN60603-7              |
| IDC connector           | IDC LSA  |
| Wire diameter           | 0.4-0.65 mm (AWG26-22)   |
| IDC durability          | >200 connection cycles   |
| Coupler material        | phosphor-bronze  |
| Coupler coating         | Brass Sn 60% Pb 40%  |
| Sequence identification | T568A and T568B  |

