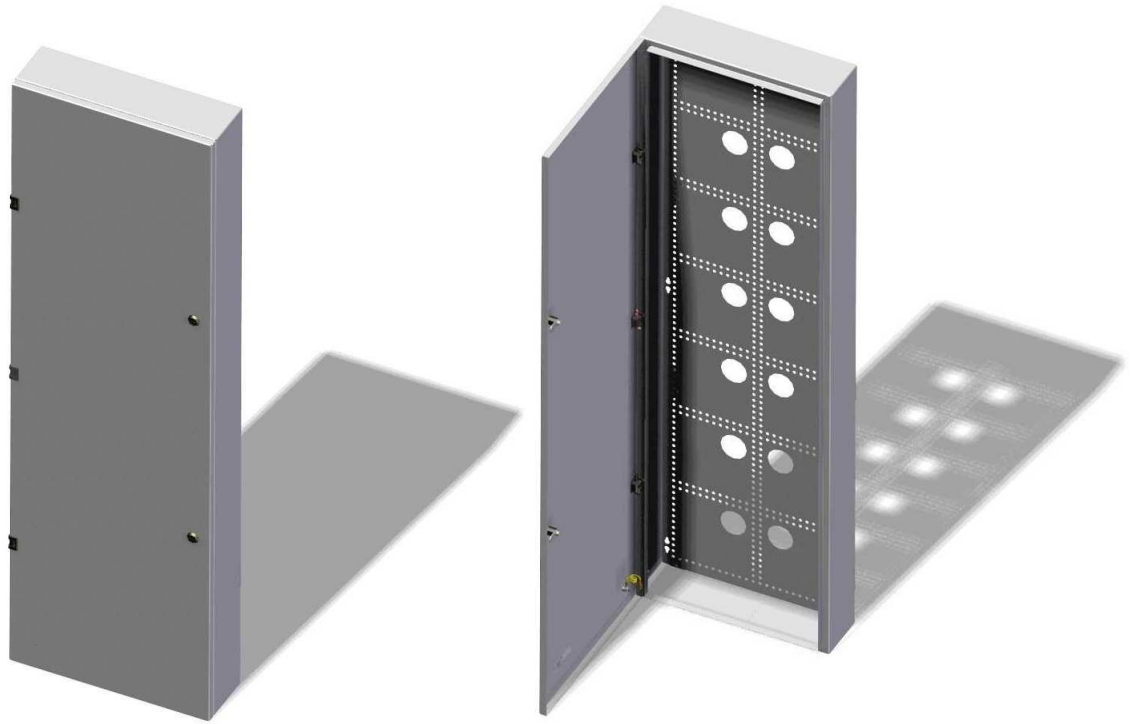


Type:	LOGIWIRE Surface mounting box MAXI-LONG	26.02.2013 REV: 0
		DK
Code:	FLW-48N-WM	

## LogiWire – surface mounting boxes

### Surface mounting box MAXI-LONG



#### **INTRODUCTION:**

Fibrain LogiWire is a system that integrates in one place external and internal communications systems. This solution is dedicated for residential construction and small commercial installations. Mounting Boxes are the main point of the whole system LogiWire. Due to a special perforation, it is possible to install the mounting modules in both vertical and horizontal.

#### **FEATURES & BENEFITS:**

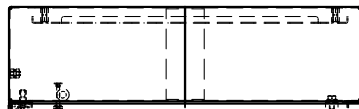
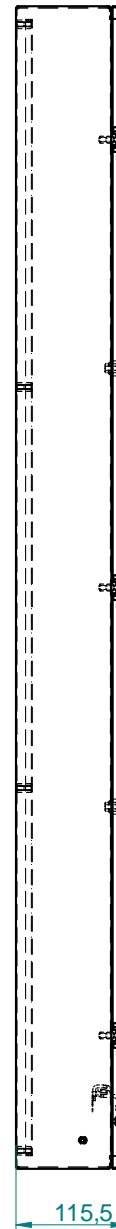
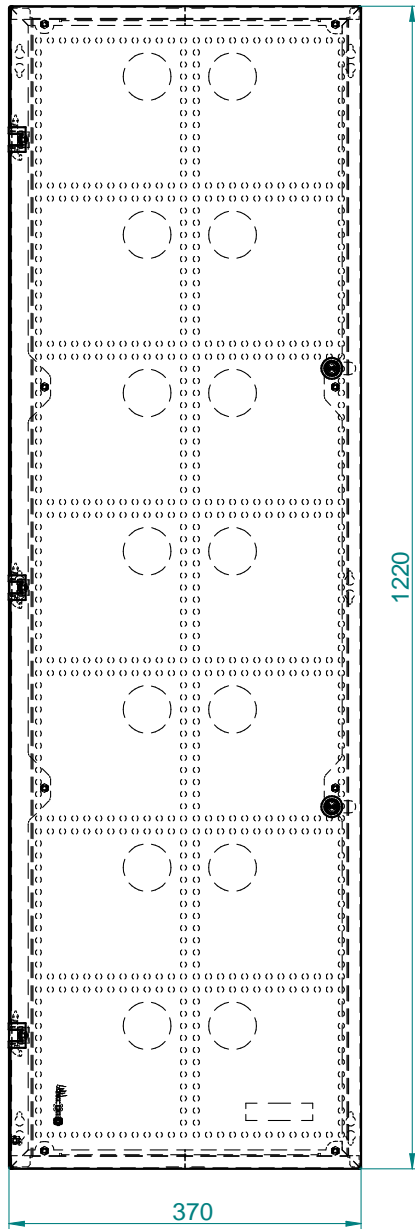
- Surface mounted,
- Aesthetic performance - powder coated sheet,
- Equipped with lock,
- Lot of cable entries - easy to install cables,
- Mounting of a right or left sided,
- Perforations allow to assembly modules and devices,
- Modules mounted vertically or horizontally,
- Flexibility - easy of reconfiguration of boxes equipment,
- Compliant with TIA 570-B,

#### **TECHNICAL SPECIFICATION:**

Dimensions				The amount and type of culverts		
Length [mm]	Height [mm]	Depth [mm]	Rim [mm]	Left/right	Up/Down	Back
370	1220	115	-	-	-	14xφ50 mm hole

Type:	LOGIWIRE Surface mounting box MAXI-LONG	26.02.2013 REV: 0
		DK
Code:	FLW-48N-WM	

**LogiWire – surface mounting boxes**



**ORDERING INFORMATION'S:**

**FLW-48N-WM** LOGIWIRE BOX MAXI-LONG MEDIACENTER HINGED DOOR SURFACE MOUNT

Important notice:  
Buyer and/or user of this product has to make sure before using this product that it is suitable for the intended use. All questions of liability relating to this product are subject – in accordance with the prevailing – to the Term of Sale of the selling Fibrain subsidiary.

