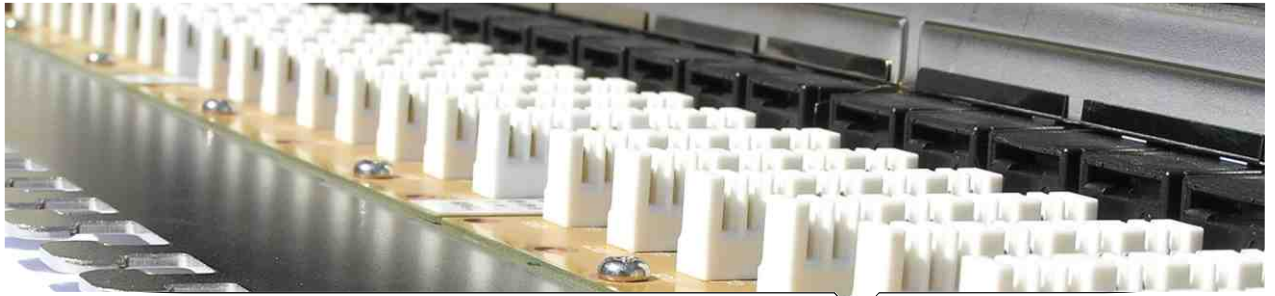


# Patchpanel cat. 5e

## UTP 24 ports

01



### Patchpanel 1U Express 5e XE100.200

UTP 24 ports patchpanel

Express 5e

FIBRAIN DATA cabling Express series is fully complied to requirements of category 5e (class D) according to the norms: ANSI/TIA/EIA 568-C.2-1(cat.5e), ISO/IEC 11801, EN 50173, EN 50173-1 IEC 61156-5, IEC 60603-7-5.

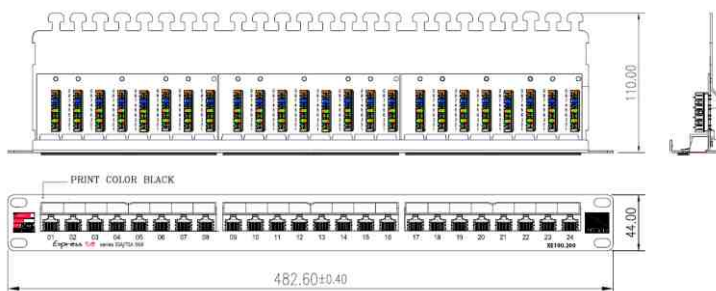
Moreover all channel's components are complied to Directive ROHS 2002/95/WE

Components Express series are characterized by high quality of transmission and mechanical parameters and very often exceeding requirements of obeying norms. Such connections support majority of contemporary applications including Ethernet 1000 BASE - T.



FIBRAIN DATA non-shielded patchpanels Express series are complied to requirements of category 5e (class D). Such connections support majority of contemporary applications. They are equipped with angle connectors IDC-LSA providing ease and fast installation.

Additionally are designed with L shaped shelf facilitate introduction changes, development and reconfiguration in easy way . Simple access to IDC connectors provides easy maintenance and change of connections. Furthermore, each port and patchpanel has their own numbering. Each set contains descriptive labels and cable bands. Standard height 19".



XE 100.200

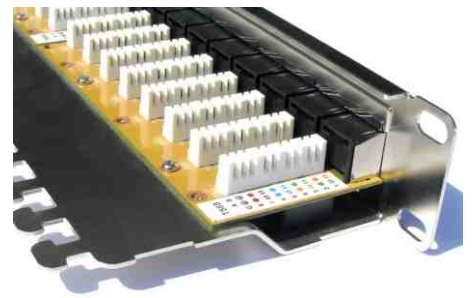
**Example:** XE 100.200 FIBRAIN DATA patchpanel Express Series 5e UTP 24 ports

#### Characteristics:

- High: 1U, 19"
- Depth: 110 mm
- 8 pins IDC connectors
- Made of powder printed sheet, black colour RAL 9005
- Easy cable assembling, cable shelf
- Description field with replaceable, pre-printed descriptive labels
- Clear port and panels numbering

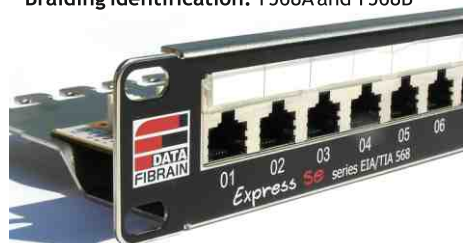
#### Electrical parameters:

- Max current value: 1,5A
- Insulation resistance: 500 MOhms min
- Pin resistance: 20 MOhms max
- DC resistance: 0,1 Ohms max



#### Mechanical parameters:

- Frame: steel plate 1,5 mm
- Jack: unshielded RJ45 cat.6
- Housing: thermoplastic material UL 94V-0, black colour
- Contacts material: bronze phosphoric
- Contacts: OD: 0,48 mm, covered with 50 µm of gold and 100 µm of nickel
- Contacts durability: >750 connection cycles according to norm: EN 60603-7
- IDC connectors: slotted angled connectors IDC LSA
- Wire diameter: 0,4- 0,65 mm (AWG 26-22)
- IDC durability: >200 connection cycles
- Coupler material: bronze phosphoric
- Coupler covering: 1,27 µm of silver and 2,5 µm of nickel
- Braiding identification: T568A and T568B



FIBRAIN.COM