

Cabinet accessories

Cabinets

Base designed for 19" server cabinet with integrated tilt protection

CKP-6/10-B				
Width [mm]	Depth [mm]	Height [mm]	Weight [kg]	Load cap.[kg]
600	1000	100	23	600
CKP-8/10-B				
Width [mm]	Depth [mm]	Height [mm]	Weight [kg]	Load cap.[kg]
800	1000	100	25.5	600

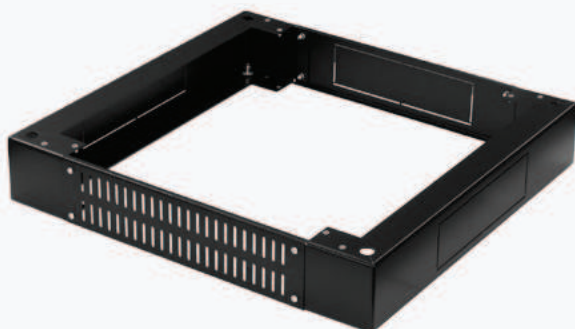


Features

- Designed to be mounted with 19" cabinets
- Material: steel sheet
- Equipped with integrated tilt protection
- Can be used in combination with leveling feet

Base designed for 19" standing cabinet

CKS-6/06-B				
Width [mm]	Depth [mm]	Height [mm]	Weight [kg]	Load cap.[kg]
600	600	100	4.7	1000
CKS-6/08-B				
Width [mm]	Depth [mm]	Height [mm]	Weight [kg]	Load cap.[kg]
600	800	100	5.9	1000
CKS-8/06-B				
Width [mm]	Depth [mm]	Height [mm]	Weight [kg]	Load cap.[kg]
800	600	100	6.6	1000
CKS-8/08-B				
Width [mm]	Depth [mm]	Height [mm]	Weight [kg]	Load cap.[kg]
800	800	100	6.5	1000
CKS-8/10-B				
Width [mm]	Depth [mm]	Height [mm]	Weight [kg]	Load cap.[kg]
800	1000	100	9.2	1000



Features

- Designed to be mounted with SRS 19" cabinets
- Can be used in combination with leveling feet or wheels
- Perforated front plate
- Base height can be increased to 200 mm by screwing two bases together