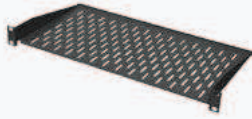


# Cabinet accessories

## Cabinets

### 1U/ 19" shelf

RAL 9005



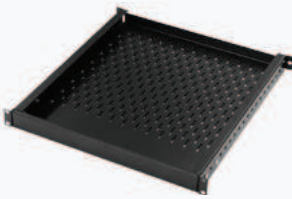
1U	PSM-25-1U-B	
	Depth [mm]	Load cap.[kg]
	250	10

#### Features

- Material: steel sheet
- Mounted at the front
- Colour: RAL 9005 black

### 1U/ 19" shelf - mounted in 4 points

RAL 9005



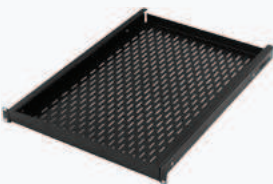
1U	PSM-35-1U-B		
	Depth [mm]	Mount. range [mm]	Load cap.[kg]
	350	150-500	80
1U	PSM-45-1U-B		
	Depth [mm]	Mount. range [mm]	Load cap.[kg]
	450	250-600	80
1U	PSM-55-1U-B		
	Depth [mm]	Mount. range [mm]	Load cap.[kg]
	550	350-700	80
1U	PSM-65-1U-B		
	Depth [mm]	Mount. range [mm]	Load cap.[kg]
	650	450-800	80
1U	PSM-75-1U-B		
	Depth [mm]	Mount. range [mm]	Load cap.[kg]
	650	550-900	80

#### Features

- Material: steel sheet
- Mounted at the front and back in 4 points
- Colour: RAL 9005 black
- Adjustable back handles in a given mounting range

### Pull-out shelf

RAL 9005



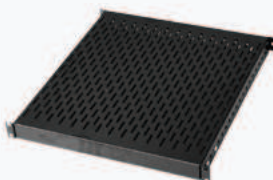
1U	PRM-45-1U-B			
	Depth [mm]	Load cap. [kg]	Mount. range	Pull-out [mm]
	450	45	445-500	345
1U	PRM-65-1U-B			
	Depth [mm]	Load cap. [kg]	Mount. range	Pull-out [mm]
	650	45	645-700	545

#### Features

- Steel sheet
- Mounted at the front or back
- Load capacity: 80 kg
- Adjustable back handles in a given mounting range
- Black plastic handles facilitate pulling movable part
- Colour: RAL 9005 black

### 1U/19" Depth adjustable shelf

RAL 9005



1U	PSZ-60-1U-B	
	Depth [mm]	Load cap.[kg]
	350-600	150
1U	PSZ-90-1U-B	
	Depth [mm]	Load cap.[kg]
	500-900	150

#### Features

- Steel sheet
- Mounted at the front or back
- Adjustable in depth every 25 mm
- Colour: RAL 9005 black