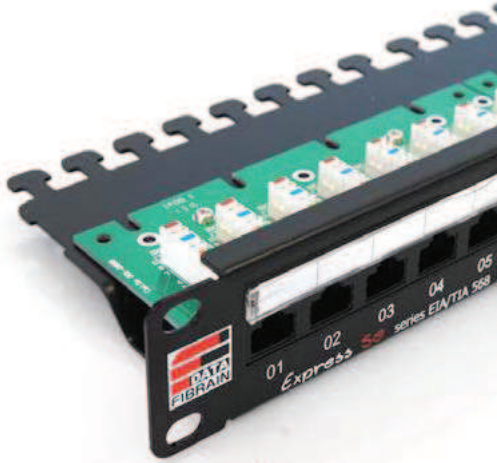
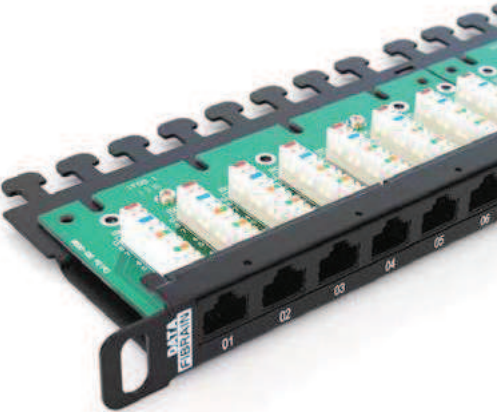


Patchpanel cat. 5e UTP 24 ports**Patchpanel cat. 5e UTP 24 ports***Express 5e***Patchpanel 1U Express 5e XE100.200**
UTP 24 ports**Norms**

- 19" standard - facilitates mounting
- Structured cabling comply with ISO/IEC 11801:2011, EN 50173:2011, TIA/EIA 568-C.2 standards
- Verification in accordance with the new standards by independent laboratory centres

**Features**

- 1U, 19"
- Depth: 110 mm
- 8-pin IDC connectors
- Material: powder-coated sheet, black
- Facilitated cable arrangement (cable shelf)
- Exchangeable description field
- Clear numbering of ports and panels

**Patchpanel 0.5U Express 5e XE100.205**
UTP 24 ports**Norms**

- 19" standard - facilitates mounting
- Structured cabling comply with ISO/IEC 11801:2011, EN 50173:2011, TIA/EIA 568-C.2 standards
- Verification in accordance with the new standards by independent laboratory centres

**Features**

- 0.5U, 19"
- Depth: 95 mm
- 8-pin IDC connectors
- Material: powder-coated sheet, black
- Facilitated cable arrangement (cable shelf)
- Clear numbering of ports and panels

ELECTRICAL AND MECHANICAL PARAMETERS

Maximum current value [A]	1.5
Insulation strength [MOhm] min	500
Contacts resistance [MOhm] max	20
DC Resistance [Ohm] max	0.1
Compliance with the norm	IEC 60603-7 Class D
Compliance with the norm	TIA568-B Cat. 5e
Frame	1.5 mm steel sheet
Jacket	Non-shielded RJ45 cat. 5e
Housing	UL94V-0 black thermoplastic
Contact material	phosphor-bronze
Contacts	0.46mm diameter covered with 50 µm gold and 100 µm nickel layer
Jack durability	>750 connection cycles in accordance with EN60603-7
IDC connector	IDC LSA
Wire diameter	0.4-0.65 mm (AWG26-22)
IDC durability	>200 connection cycles
Coupler material	phosphor-bronze
Coupler coating	1.27 µm silver and 2.5 µm nickel layer
Sequence identification	T568A and T568B