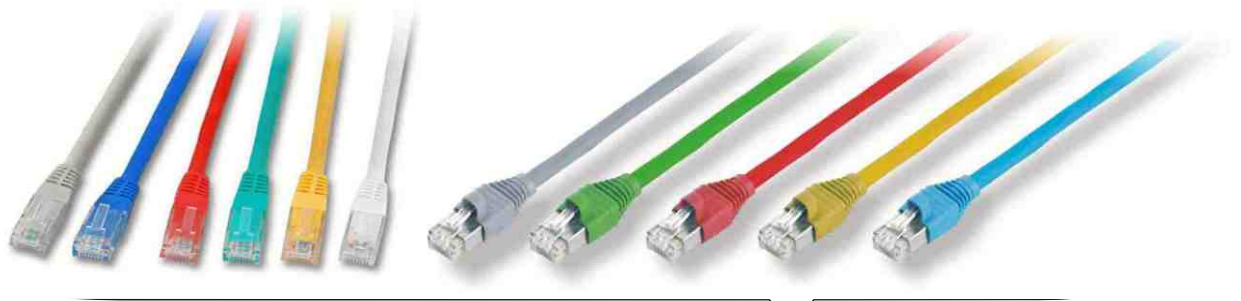


Patchcord cat. 5e UTP

01



Patchcord cat. 5e Category 5e UTP

Express 5e

FIBRAIN DATA cabling Express series is fully complied to requirements of category 5e (class D) according to the norms: ANSI/TIA/EIA 568-C.2-1(cat.5e), ISO/IEC 11801, EN 50173, EN 50173-1 IEC 60603-7-4.

Moreover all channel's components are complied to Directive ROHS 2002/95/WE

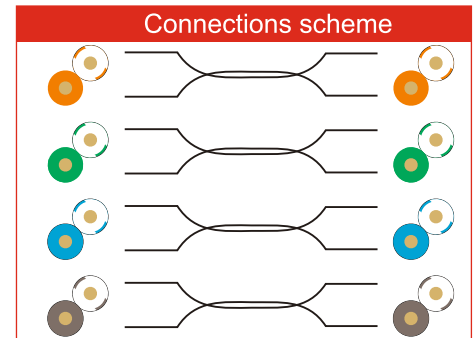
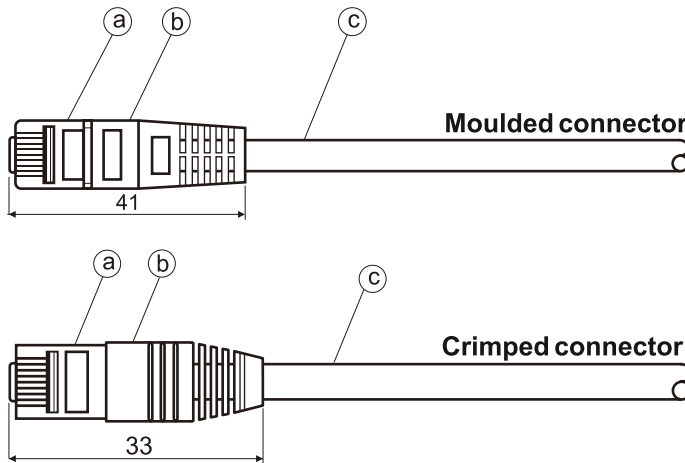
Components Express series are characterized by high quality of transmission and mechanical parameters very often exceeding requirements of obeying norms. They fully provide 125 MHz transmission.

Applications:

- 10BASE-T (IEEE 802.3)
- 4/16 Mbps Token Ring (IEEE 802.5)
- 100BASE-VG-AnyLAN
- 100 Mbps TP-PMD (ANSI X3T9.5)
- 100BASE-T (IEEE 802.3)
- 55/155 Mbps ATM
- 1000BASE-T (Gigabit Ethernet)

Norms:

- IEC 60332-1
- ANSI/TIA/EIA 568-C.2 (Cat. 5e)
- ISO/IEC 11801
- IEC 61156-5
- EN 50173, EN 50288



Construction parameters:			
Parametr			
Connector type (a)	for :	mould	Rj45, not shielded , 1:1 acc. TIA/EIA 568B
		crimped	Rj45, not shielded , Steward SS39100-007 1:1 acc. TIA EIA 568B
Cover type (b)	for :	mould	PVC 75A, length in-printed in cover
		crimped	PVC 75A, length in-printed in cover
Cable type (c)	for :	mould	U/UTP AWG 24 PVC
		crimped	U/UTP AWG 26/27 LSOHH

Reference: XE **2** **0** **0** **0** **00**

Component kind: 2 - patchcord	Shield type: 0 - U/UTP	Colour: 0 - grey 1 - blue 2 - green 3 - red 4 - yellow	Connector kind: 0 - mould 1 - crimped	Length: 00 - 0,5 meter 01 - 1 meter 02 - 2 meters 03 - 3 meters 05 - 5 meters 07 - 7 meters 10 - 10 meters 15 - 15 meters 20 - 20 meters 25 - 25 meters 30 - 30 meters
---	----------------------------------	--	--	--