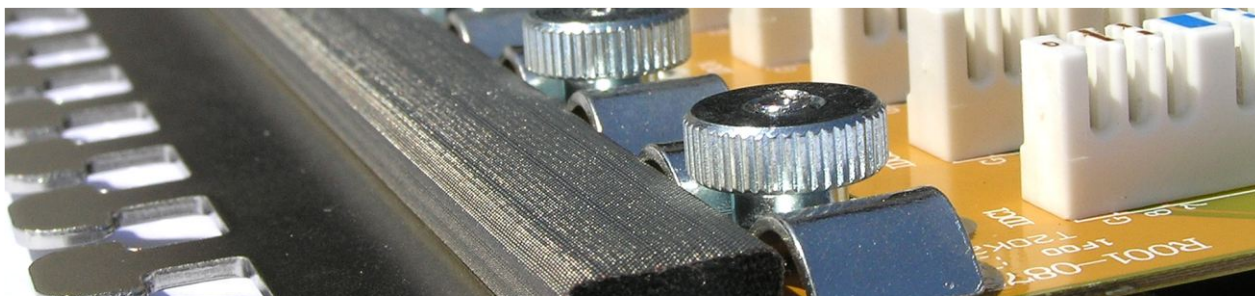


# Cat. 6 Patchpanel

## FTP/STP 24 ports

01



### Patchpanel 1U Quick 6 XQ 100.250

FTP/STP 24 ports patchpanels

**Quick 6**

FIBRAIN DATA Structural Cabling Quick Series, fully satisfies the requirements of cat. 6 250 MHz (class E) in accordance with standards ANSI/TIA/EIA 568-C.2 (cat.6), ISO/IEC 11801, EN 50173, EN 50173-1, IEC 60603-7-5.

Also all components of the transmission line complete ROHS 2002/95/WE Directive.

Components of Quick version are characterized by high quality of transmission and mechanical parameters. They often exceed requirements of valid standards. Fully provide 250 MHz (Class E) transmission.

FIBRAIN DATA Shielded patchpanels Quick series fully comply with requirements of cat. 6 (Class E) and perform transmission of 250 MHz. Are equipped with specific 9 pins angled connectors IDC-LSA which ensure ease and rapidity of assembly and additionally connection with grounding. Such an assembly provides very high transmission performance as well as resistance to interference. Patchpanels are also design in L shape having a shelf which allows to make easy changes, extension and reconfiguration. Easy access to IDC connectors allows maintenance and changes in connections. Crossing field has a place for marking labels, which enable aesthetic and multiple connection description.

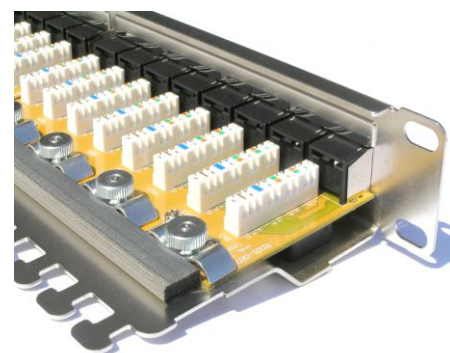
Furthermore each port and panel, is numbered. Standard height 19". The set consists of pre-printed descriptive labels as well as cable clamps.

#### Characteristics:

- High: 1U, 19"
- Depth: 110 mm
- 9 pins IDC connectors
- Shielded cover connected with grounding spot
- Made of powder printed sheet, black colour RAL 9005
- Easy cable assembling, cable shelf
- Description field with replaceable, pre-printed descriptive labels
- Clear port and panels numbering

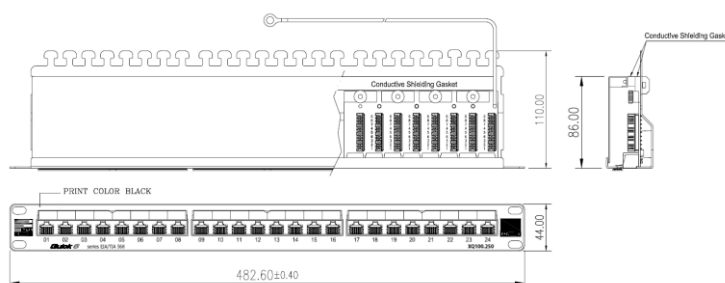
#### Electric parameters:

- Insulation resistance: 500 MOhms min
- Contacts resistance: 10 MOhms max
- DC resistance: 0,1 Ohms max
- According to norm: IEC 60603-7 Class E
- According to norm: TIA568-C Cat.6
- Shield impedance: 100 MHz 2000 MOhms max



#### Mechanical parameters:

- Frame: steel plate 1,5 mm
- Screen: shielded cover made from galvanized steel 1,5 mm
- Jack: shielded RJ45 cat.6
- Housing: thermoplastic material UL 94V-0, black colour
- Contacts material: bronze phosphoric
- Contacts: OD: 0,48 mm, covered with 50 µm of gold and 100 µm of nickel
- Contacts durability: >750 connection cycles according to norm: EN 60603-7
- IDC connectors: slotted angled connectors IDC LSA
- Wire diameter: 0,4- 0,65 mm (AWG 26-22)
- IDC durability: >200 connection cycles
- Coupler material: bronze phosphoric
- Coupler covering: 1,27 µm silver and 2,5 µm nickel
- Braiding identification: T568A and T568B

**XQ100.250**

Example: XQ100.250 patchpanel Fibrain DATA Quick series 6 STP 24 ports