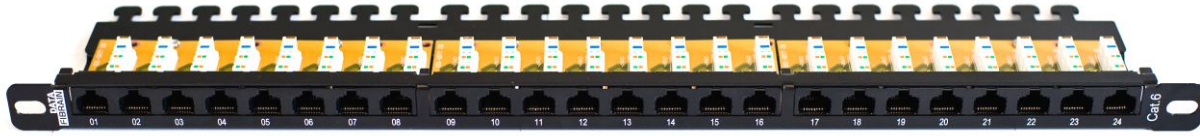


# Cat. 6 Patchpanel

## UTP 24 ports

01



### Patchpanel 0,5U Quick 6 XQ 100.205

#### UTP 24 ports patchpanel

**Quick 6**

FIBRAIN DATA Structural Cabling Quick Series, fully satisfies the requirements of cat. 6 250MHz (class E) in accordance with standards ANSI/TIA/EIA 568-C.2 (cat.6), ISO/IEC 11801, EN 50173, EN 50173-1, IEC 60603-7-5.

Also all components of the transmission line complete ROHS 2002/95/WE Directive.

Components of Quick series are characterized by high quality of transmission and mechanical parameters. They often exceed requirements of valid standards. Fully provide 250 MHz (Class E) transmission.

FIBRAIN DATA Unshielded patchpanels Quick series fully comply with requirements of cat. 6 (Class E) and perform transmission of 250 MHz. They are equipped with angled connectors IDC-LSA which ensure ease and rapidity of assembly. Additionally has shelf in L-shape design which allows to make easy changes, extension, reconfiguration. Easy access to IDC connectors allows maintenance and changes in connections.

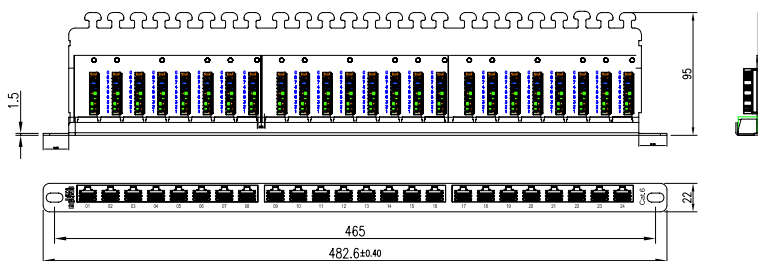
What is more, each port as well as patchpanel has their own numbering. Standard 19".

#### Characteristics:

- Height: 0,5U, 19"
- Depth: 95 mm
- 8 pins IDC connectors
- Made of powder printed sheet, black colour RAL 9005
- Easy cable assembling, cable shelf
- Clear port and panels numbering

#### Electric parameters:

- Insulation resistance: 500 MOhms min
- Contacts resistance: 10 MOhms max
- DC resistance: 0,1 Ohms max
- According to norm: IEC 60603-7 Class E
- According to norm: TIA 568-C Cat.6



#### Mechanical parameters:

- Frame: steel plate 1,5 mm
- Jack: unshielded RJ45 cat.6
- Housing: thermoplastic material UL 94V-0, black colour
- Contacts material: bronze phosphoric
- Contacts: OD: 0,48 mm, covered with 50 µm of gold and 100 µm of nickel
- Contacts durability: >750 connection cycles according to norm: EN 60603-7
- IDC connectors: slotted angled connectors IDC LSA
- Wire diameter: 0,4- 0,65 mm (AWG 26-22)
- IDC durability: >200 connection cycles
- Coupler material: bronze phosphoric
- Coupler covering: 1,27 µm silver and 2,5 µm nickel
- Braiding identification: T568A and T568B

**XQ100.205**

Example: XQ100.205 patchpanel Fibrain DATA Quick series 6 UTP 24 ports