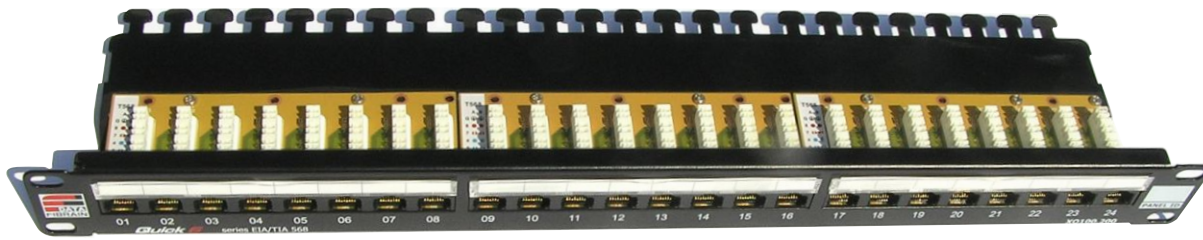


Cat. 6 Patchpanel

UTP 24 ports

01



Patchpanel 1U Quick 6 XQ 100.200

UTP 24 ports patchpanel

Quick 6

FIBRAIN DATA Structural Cabling Quick Series, fully satisfies the requirements of cat. 6 250 MHz (class E) in accordance with standards ANSI/TIA/EIA 568-C.2 (cat.6), ISO/IEC 11801, EN 50173, EN 50173-1, IEC 60603-7-5.

Also all components of the transmission line complete ROHS 2002/95/WE Directive.

Components of Quick series are characterized by high quality of transmission and mechanical parameters. They often exceed requirements of valid standards. Fully provide 250 MHz (Class E) transmission.

FIBRAIN DATA Unshielded patchpanels Quick series fully comply with requirements of cat. 6 (Class E) and perform transmission of 250 MHz. Are equipped with angled connectors IDC-LSA which ensure ease and rapidity of assembly. Additionally design in L shape having a shelf which allows to make easy changes, extension, reconfiguration. Easy access to connectors allows maintenance and changes in connections. Crossing field has a place for marking labels, which enable aesthetic and multiple connection description.

Furthermore, each port and patchpanel has their own numbering. Each set contains descriptive labels and cable bands. Standard height 19".



Characteristics:

- Height: 1U, 19"
- Depth: 110 mm
- 8 pins IDC connectors
- Made of powder printed sheet, black colour RAL 9005
- Easy cable assembling, cable shelf
- Description field with replaceable, pre-printed descriptive labels
- Clear port and panels numbering

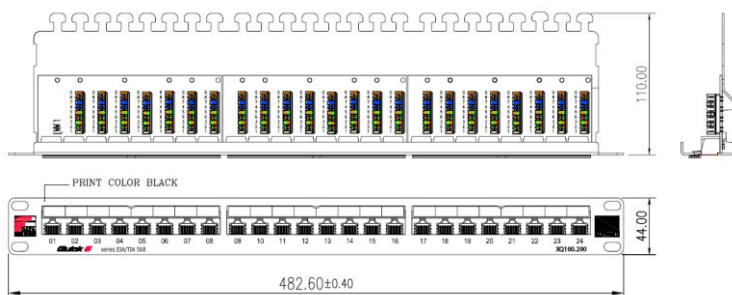
Electric parameters:

- Insulation resistance: 500 MOhms min
- Contacts resistance: 10 MOhms max
- DC resistance: 0,1 Ohms max
- According to norm: IEC 60603-7 Class E
- According to norm: TIA568-C Cat.6



Mechanical parameters:

- Frame: steel plate 1,5 mm
- Jack: unshielded RJ45 cat.6
- Housing: thermoplastic material UL 94V-0, black colour
- Contacts material: bronze phosphoric
- Contacts: OD: 0,48 mm, covered with 50 µm of gold and 100 µm of nickel
- Contacts durability: >750 connection cycles according to norm: EN 60603-7
- IDC connectors: slotted angled connectors IDC LSA
- Wire diameter: 0,4- 0,65 mm (AWG 26-22)
- IDC durability: >200 connection cycles
- Coupler material: bronze phosphoric
- Coupler covering: 1,27 µm silver and 2,5 µm nickel
- Braiding identification: T568A and T568B



XQ100.200

Example: XQ100.200 patchpanel Fibrain DATA Quick series UTP 24 ports